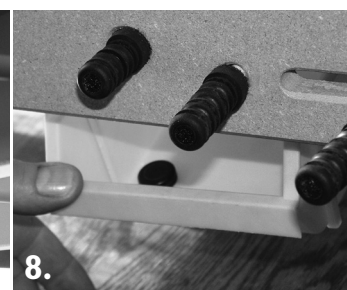
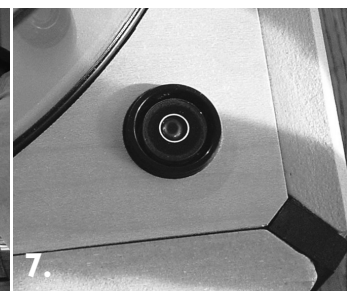
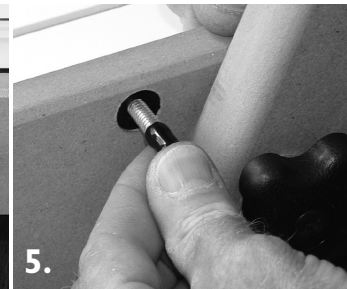
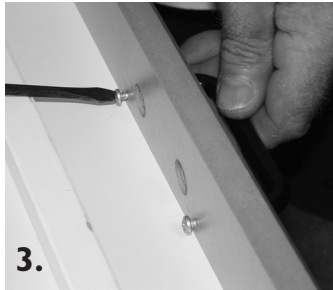
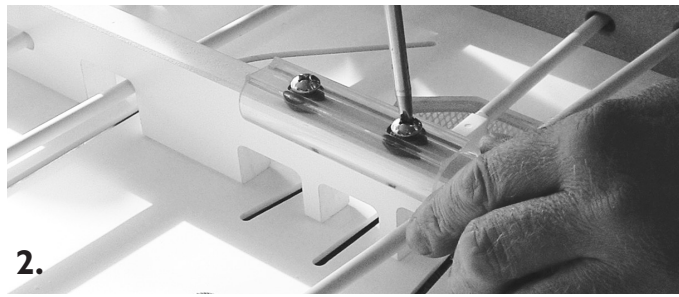


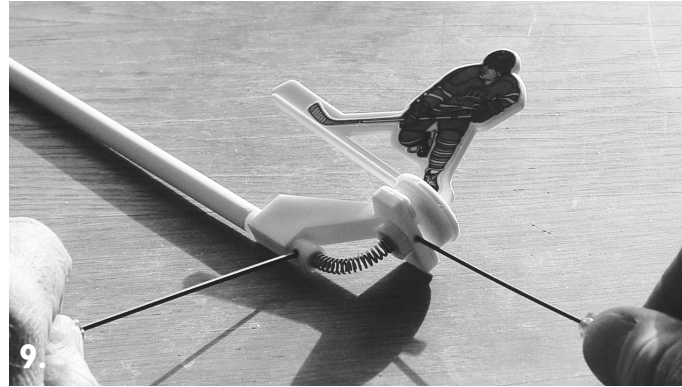
Table Hockey®

Since 1982

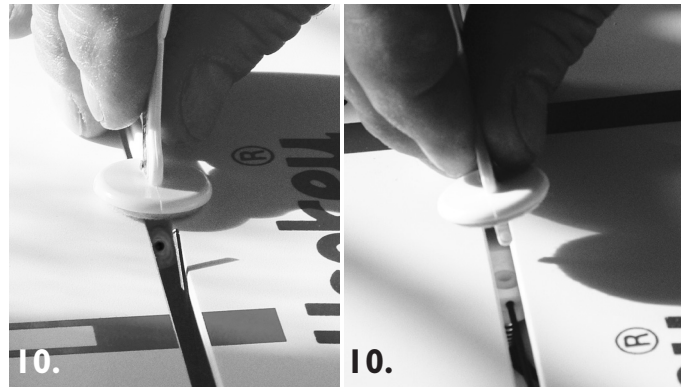
1. Place game upside down with the clear shields resting on your table.
2. Spread and fix the clear clamps by tightening the bolts until snug only.
3. Fasten the black handle by fully tightening screws into handle holes.
4. Mount the walnut shelf using its knobs to tighten from inside of frame. Shelf holds the balldriver and pucks. Remove the shelf for handle use.
5. Tighten the 4 stop pin bolts into frame, then push orange caps fully onto bolts. The pins keep the legs rigid.
6. Put the 4 long bolts into holes from the inside of frame, then add large washers to bolts on the outside. Legs mount to bolts with pointed end of legs towards the near end of game. Add small washers and tighten knobs. Legs move on bolts for levelling and fold onto the frame for transport.
7. Flip game over onto its legs and position on table. The game will be as solid as the table it sits upon. Level the ice by adjusting rink and legs until bubble is centered. Keep legs to pins and tighten knobs fully.
8. Mount the yellow puck boxes by sliding box clip between the clamp and strut from left to right and then centering box to clamp. Push down on box handle to remove scored pucks.



9. Use the 1/16 balldriver tool for each rod and spring connection. All rod pins and player pegs are D shaped and fit into the D holes at each end of the springset bushings.



10. To access the setscrew that holds the player, place the balldriver into the small hole in glide just below the ice surface until tool clicks into setscrew. Player stickblade should point to its own end, the goaler glove should point to center ice. Turn the player slightly until tool mates with the setscrew. Left to loosen, right to tighten. Support glide from below and insert player peg from above.



11. Make sure peg is FULLY down into bushing, then tighten setscrew until it is SNUG. Pull tool straight out. Adjustments can be made by removing player and bending the nylon peg, if a stickblade is playing too high, or if a stickblade is catching slots too low.



12. Use the Novus to clean and polish surface, shields and all parts. Use a good paper towel to spread polish, then buff with a dry one. Cover game when not in use and occasionally put a drop of oil on springs to extend life.

TableHockey®

355 PETTEYS ROAD GREENWICH NY 12834 518 692 7622 TABLEHOCKEY.COM